

The Edulogger

2021 Virtual Conference

"We saved on travel costs and more members of the team could participate without leaving the office short-staffed. The trainers were really knowledgeable and the online platform was very easy to navigate!"

- Lisa Riveros

Read more on page 5



Tips for School Startup!

We know that School Start-up can be a stressful time for transportation professionals. The big question here is "When should you start preparing for this?"

- Start preparing in the spring.
- Get a seat at the table early if boundary changes and bell-time changes are being considered.
- Using a data area other than your Live area to start rolling over students and adding new students.
- Taking care of these things during March and April alone will assist in minimizing the pandemonium of school start up.



Get Ahead and Be Prepared!

The time has come for 2021-2022 school startup planning. Edulog can help you plan for the road ahead. Our Account Management and Service Level Management teams will be reaching out soon to schedule a brief 10–15-minute conversation. We can proactively get your tickets scheduled and ready for the support queue. Be ready because we will be calling.

What we need from you:

1. Your availability for a brief 10–15 minute meeting,
2. An idea as to which data set(s) you will be using for Fall planning,
3. Whether summer school planning is needed,
4. A timeline for when you want to get started,
5. A schedule for when your Student Information System will be rolling students to the 2021-2022 year,
6. A list of upcoming changes at your district (i.e., boundaries, schools or grade placement), and
7. Your excitement to start and finish planning ahead of time.



Trainer Spotlight!

Best Vegas Class: I usually teach the Beginner classes for eSQL. I really like teaching these classes because I get to teach the same group for a few sessions. I watch my students grow so much and head back to the office with great confidence in how to execute our routing software at their site. Teaching Runs is by far my favorite part of that.

Favorite Edulog Product: Parent Portal Lite is by far my favorite product. It is innovative, useful to students, and cuts down on phone calls to the transportation office.

Dream Vacation: Lately, I have been dreaming of warmth and sandy beaches. I don't really care where that may be.

Edulog Advice: Do not update your Java and say "yes" to the map maintenance pop-ups!

Quote:

"No one who achieves success does so without acknowledging the help of others. The wise and confident acknowledge this help with gratitude." Alfred North Whitehead

Favorite Food: I am a sucker for arugula and cilantro.

Favorite Color: Turquoise

From Management

Welcome to the first issue of The Edulogger, a way for us to share exciting and useful information with our user community. This newsletter will regularly include information about Edulog software and services, highlights about members of our team, and handy tips and tricks about best practices or creative ways to leverage your Edulog software. Highlights in this issue include our new Data Assessment Reviews, FAQ from Edulog Support, and school startup essentials like the new Ride Registration service.

Through this last year, Edulog has continued to grow and evolve. In addition to our constant innovations in our technology and service offerings, Edulog is refreshing how we stay connected with you and ensure that you have opportunities to participate in webinars, peer group meetings, and other ways of getting the most out of your Edulog software and services.

New Team Members

Wes Hogan, Regional Sales Manager, SE Region

Amanda Prescott, Business Development

David Goldberg, Support

Samantha Devin, Business Services

John Hammond, Business Development

Grant Dutton, Service Level Management, Business Unit Lead

Kelci McFarland, Project Management

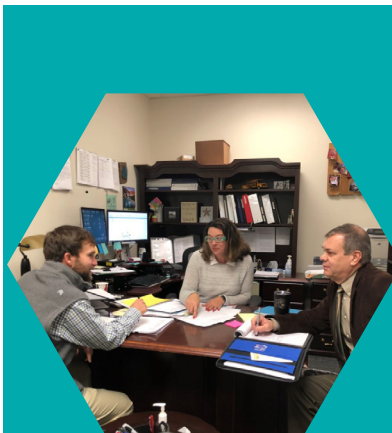
Theresa Chastain, Support

Team Changes

Arika Steele: Manager, Client Engagement

Spencer Jenko: Data Analysis & Optimization Team Lead

Chris Lowry: Client Solutions Architect



Advisory Services

Edulog's Advisory Services group has been working with districts to manage significant change projects, including transportation re-designs, bell-time changes, re-tierings, and much more. Click here to see how Edulog's Advisory Services Group could help you: [Advisory Services](#)



It's Rollover Season!

Schools across the nation had to go to extraordinary lengths during the pandemic to ensure that students and staff were safely distanced in the schools and on buses. A common solution was to split students into two different groups, often called A and B, via the use of Programs. This may require extra attention when planning for the next school year, whether using the Rolovr utility or a student import ("download") to promote students to the next grade.

The Rolovr utility utilizes a student's program field in addition to the school and grade when consulting its helper file Rolovr.dat to figure out the next school, grade, and program. Your current Rolovr.dat may need to be edited in a text file editor or Edulog's BuildTxt to have an additional line added for each program that was added to each grade at each school, regardless of whether you are planning on using those programs next year or not. If the new programs were used extensively throughout your data, it may be easier to use BuildTxt's ability to automatically rebuild the Rolovr.dat file from scratch utilizing all the schools, grades, and programs that exist in that data area.

A student download can optionally update the Program field. If configured this way, a download of a student file with the students already promoted will probably update the program field correctly. If your download is not

configured to update the program field, it will leave your students in whatever program they had before, even if they move to a new school. If you are not planning on using the A/B programs next year, or middle or high schools don't use A/B programs but your elementary or middle schools do, an extra step utilizing the Rolovr utility and a specially-crafted Rolovr.dat to remove the A/B programs may be necessary.

If you are using programs to handle crowding on buses and the classroom, you may wish to start the rollover process earlier than normal. Your Account Manager, Service Level Manager, or Product Support would be happy to discuss your particular situation and needs and come up with a plan that will work for you.



Data Overview Report

The Data Overview Report is one of the latest innovations from Edulog's Advisory Services Group.

It is a specialized reporting tool that provides a quick look into a district's Edulog SQL data, summarizing the extent and complexity of the district's routing system, as well as identifying potential red flags in the data.

Student transportation is an incredibly complex system for school districts to manage, and ties together a wide array of geographical, student, and institutional data. The amount of information contained within a single SQL database can be immense, and familiarizing oneself with it can be a time-consuming process. Even the most competent and experienced route managers can find themselves overwhelmed with the volume of data they must balance with day-to-day operations. Often-times issues, errors, and missing entries can go unnoticed by users until they accumulate and start causing problems down the road.

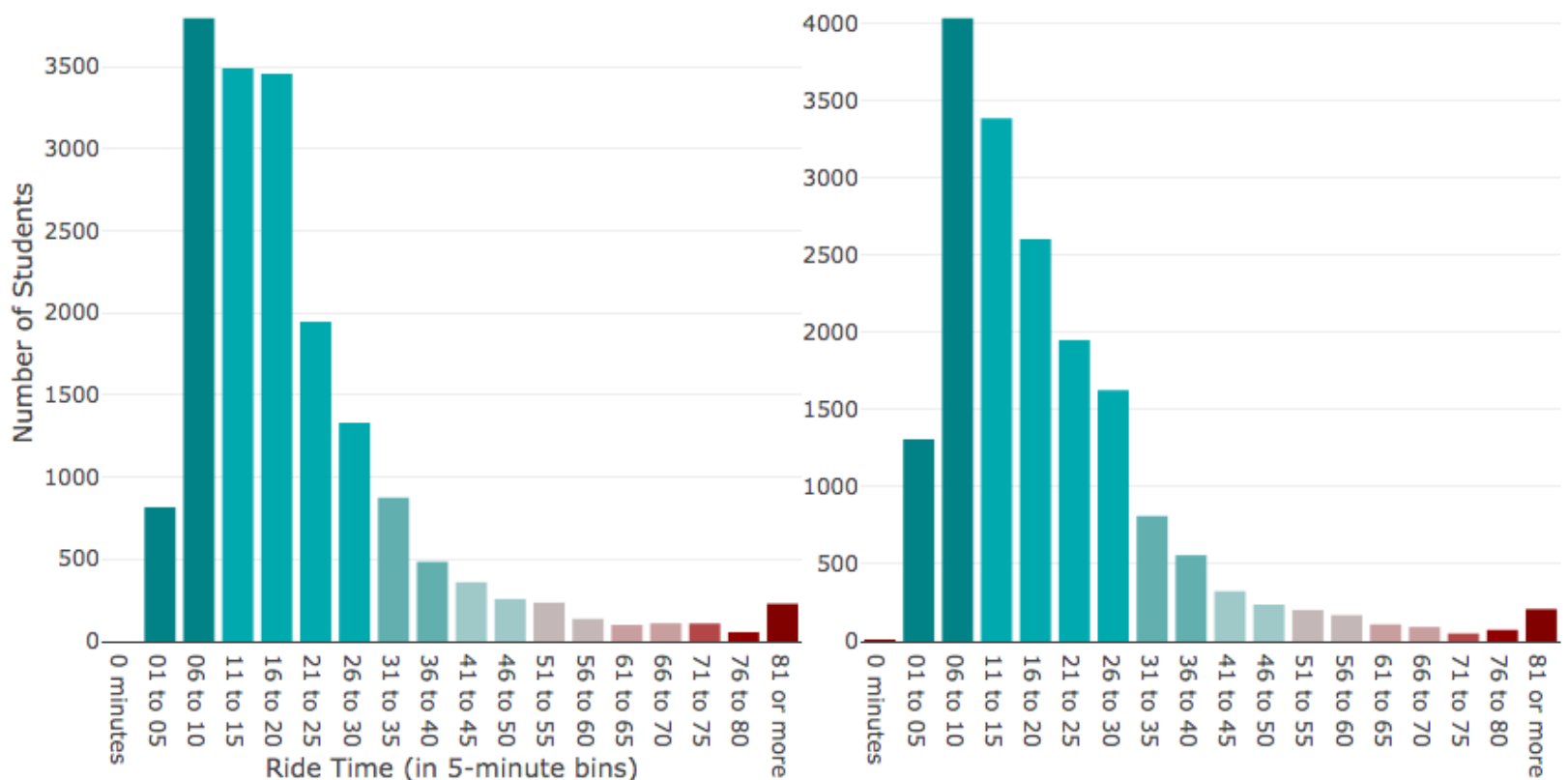
The Data Overview Report attempts to aid users of Edulog SQL by helping to summarize a dataset in

the most effective manner possible to the reader. It steps the reader through each major component of their transportation data, before diving headlong into identifying potential problems in the data itself. The tool is capable of handling districts both small and large, and when used correctly alongside Edulog expertise, it can provide deeper insight into how well a system is being managed, as well as providing a clear roadmap when things need to be corrected, added or removed.

For further questions about whether this report could be a helpful tool to you, or just to learn more about it, please contact your district's Account Manager.

“Even the most competent and experienced route managers can find themselves overwhelmed with the volume of data they must balance with day-to-day operations.”

AM/PM Student Ride Times



Ride Registration:

Smart Planning for School Start

To mitigate the impact of COVID-19 on our schools, Transportation needs to know who plans to ride the bus. Edulog can help you identify planned actual ridership numbers needed to plan effective routes according to the latest allowable capacities.

To reduce strain on your transportation team and resources, Edulog enables parents in your community to opt-in for the transportation they need using an accessible app and our Ride Registration service. This streamlined communication helps to immediately identify school startup needs. You can make important decisions based on actual needs instead of rider eligibility alone.

The process of Ride Registration eliminates cumbersome surveys and the managing of paper forms. There is no need for integration with your Student Information System (SIS) or a GPS/AVL platform. Our Advisory Services team will lead you through the data-gathering process and implementation of the app. Once parents download the app, registering for a ride takes just a few clicks. Parents confirm their address and click submit.

From there, Transportation can approve or reject the request, provide notes or comments on the decision, and initiate two-way messaging when a brief conversation is required. Parents will be notified via the app.

“The data from Ride Registration was imported directly into our Edulog Routing and Planning software. With limited capacity, new CDC Guidelines, and reduced ridership, Ride Registration helped us pinpoint exactly where our services were most needed and allowed us to run and maintain efficient routes with everything that is going on.”

- Avery Sponsler, Route Coordinator, Agua Fria Union High School District, Arizona

For Edulog clients, Ride Registration is just one part of a safe, efficient, economical student transportation management system. Ride Registration is an ideal project with which to introduce Parent Portal to your community. You can expect higher rates of engagement

with Parent Portal by introducing the app to your community with the Ride Registration process.

We're more than happy to give you a free demo of Ride Registration, answer your questions, and brainstorm with you how this service can benefit both your school district and your community. Click here to [streamline your transportation communication](#) or email us at info@edulog.com.



Our First Virtual Conference

We were fortunate to see many of our clients face-to-face in February of 2020 for our 25th conference. Little did we know that would be the last time for over a year. Days later, lockdowns occurred throughout the nation. Instead of our usual post-conference follow-up, the Edulog team found themselves acclimating to a sudden shift to remote work. Weeks became months and we adapted as best we could to the new normal.

In late summer, we realized that we'd have to wait a bit longer for our next face-to-face event but that the conference would still go on. The proposal of a virtual conference was met with honest hesitation. Our conference in Clark County, NV offered a retreat from everyday routines and immersion in a shared educational experience. What more could a virtual conference offer? It turns out, quite a lot.

With new budget constraints and health concerns restricting travel policies, holding a virtual conference allowed for a more inclusive and differently scaled event. Gone were the concerns about equipment and facilities. We could focus directly on educational content and





its delivery. Anyone with an Internet connection could access the event, which also included many from the Edulog team.

Lisa Riveros, Transportation Director for Wichita Public Schools (KS), said her district loved the remote conference: “We saved on travel costs and more members of the team could participate without leaving the office short-staffed. The trainers were really knowledgeable and the online platform was very easy to navigate!”

Jennifer Montez, Routing & GPS Coordinator for Toledo Public Schools (OH) said, “My first class at the conference opened my eyes so much and from that day forward I was excited... With this conference I have so many items that I want to put into place for Toledo Public Schools to further improve our Transportation Department.”

Avery Sponsler, Route Coordinator for Agua Fria Union High School District (AZ), said his favorite part was “all the amazing staff from Edulog, so much experience and talent they make it hard not to walk away from the conference better than when you started.”

Our biggest challenge at this virtual event was creating quality engagement with our remote audience. From our perspective, the past weeks were filled with joy, laughter, and an honest reminder that we serve a community of dedicated transportation professionals. We are grateful to all of our clients for this experience. As we plan for next year’s conference, we aim to provide the strengths of all of the formats available to us, but, most of all, we’re looking forward to seeing your faces again.

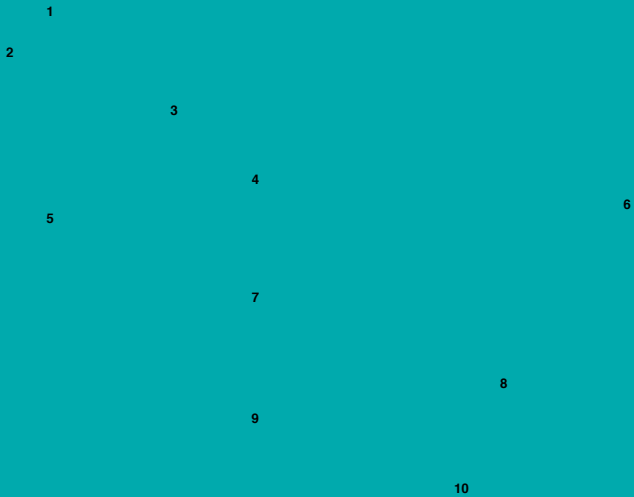
Information about Edulogger

Spencer Jenko, Edulogger Artist
Kwanele Khumalo, Newsletter Design
Arika Steele and Andy Smith, Editors

Contributing Articles:

Spencer Jenko
Kate Gammill
Barak Nelson
Lam Nguyen-Bull
Sam Bull
Andy Smith
Arika Steele

EDULOGGER CROSSWORD



ACROSS

- 2. The foundation for effective transportation planning
- 5. Ancient Greek goddess associated with wisdom
- 7. Online training resource for Edulog software
- 9. Edulog’s GPS technology partner
- 10. Driver’s view route directions on this

DOWN

- 1. The state in which Edulog was founded
- 3. How you know who is actually riding the bus
- 4. Who needs to know the school bus location?
- 6. Making the best use of a resource
- 8. Facts and statistics collected together

Answers:

- 1. Montana
- 2. Routing
- 3. Ridership
- 4. Parents
- 5. Athena
- 6. Optimize
- 7. EdulogU
- 8. Data
- 9. Samsara
- 10. Tablet