



EAST ALLEN COUNTY SCHOOLS

TRANSPORTATION DEPARTMENT

1322 Green Road, New Haven, Indiana 46774
Phone: 260-446-0159 • Fax: 260-446-0139



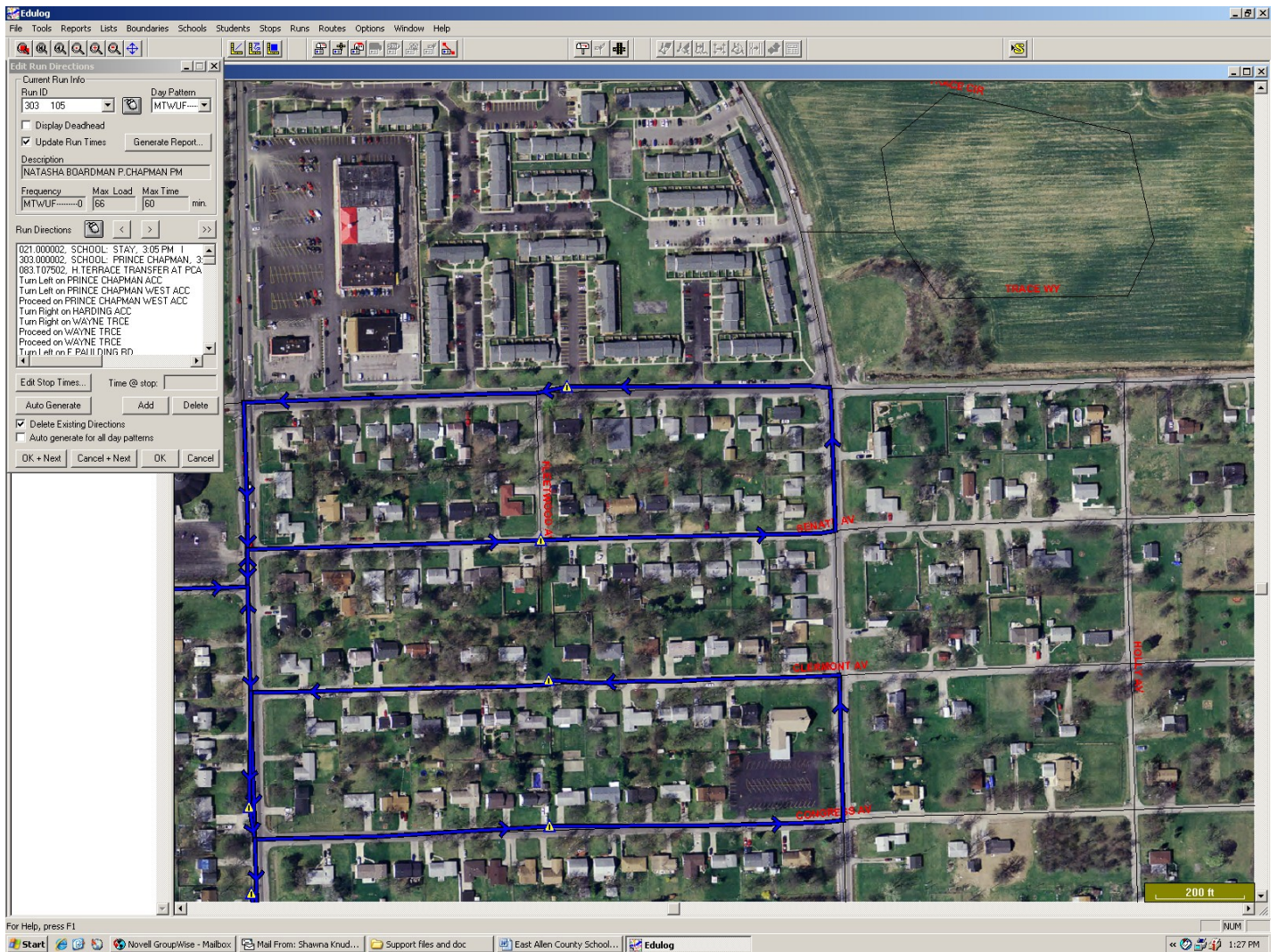
Dear Edulog:

Here at the East Allen County Schools we are very grateful to Edulog for the work and information you provided to us in modifying local aerial orthophotos to overlay the maps we use with our Edulog.nt system. Your team effort has really enhanced our transportation system, and has allowed us to more easily interact with our drivers to identify and resolve stop, walk, and travel safety problems quickly. I no longer have to take time away from other critical work to drive out and view a problem area in person. In most instances, I can easily see on the Edulog orthophoto the safest spot to add a new stop for a new student – no more accidentally adding a stop where no sidewalk exists! When a driver gives me a heads-up that a problem exists along the run, such as a large tree blocking the driver's corner view, we can work together to analyze the issue right away, with the driver still on the phone, and thus resolve the problem to everyone's satisfaction. The result is safer routes and stops for our students, and better use of our drivers' time and equipment. The map display also lets me know the location of railroad tracks, empty lots, and ponds, thus making it much easier to review hazards and incorporate them into our routing scheme.

I recently demonstrated this new map and also the Shape Server and shape nodes features of the Edulog system for our local users group. Everyone was quite impressed with the accuracy and ease-of-use these new capabilities gave us when adding new housing developments and creating new bus runs. The whole group thought that this information incorporated into the Edulog system would be valuable to make bus-turn-friendly cul-de-sacs and safe loading and unloading areas in their housing developments. What a wonderful improvement!

In this screen capture below, look at the things that I can make instant decision about:

- Can I use the plaza parking lot as a turnaround? (upper left of image)
- I need a mid block stop for 10 kids, is there an area available for them to stand? (look at second street from the bottom, middle of the block)
- I want my stops located at the entrances to the apartment buildings. Where should I put them? (apartments are located in the upper middle of image)



The accuracy and detail provided by this new mapping function is simply miles ahead of anything else available to school transportation officials. These new capabilities have made my job a lot easier, and I look forward to future developments from Edulog. Thank you once again to the entire Edulog staff for their effort and friendly support.

Regards,

Roger Miller